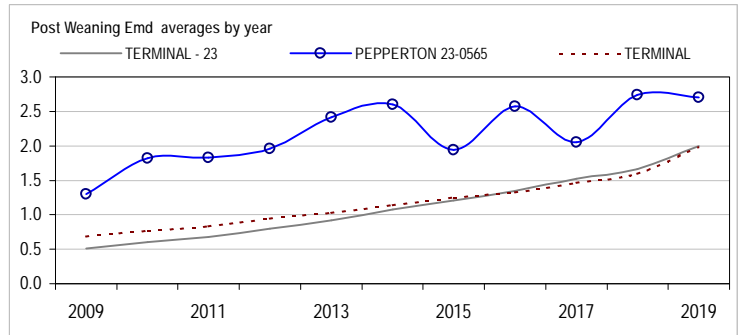
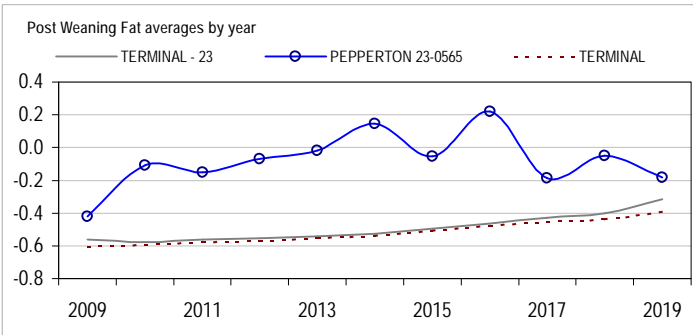
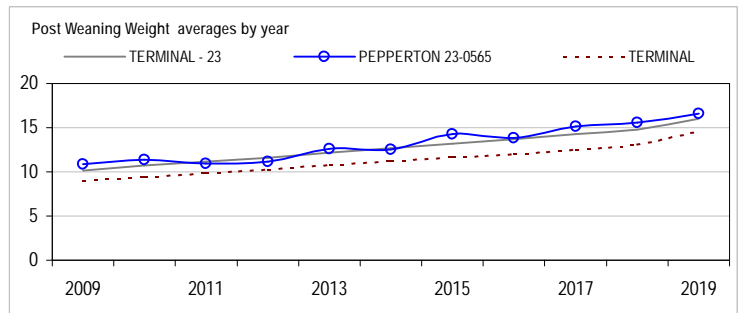
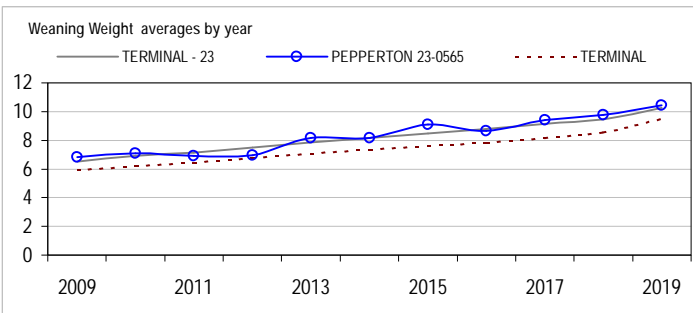
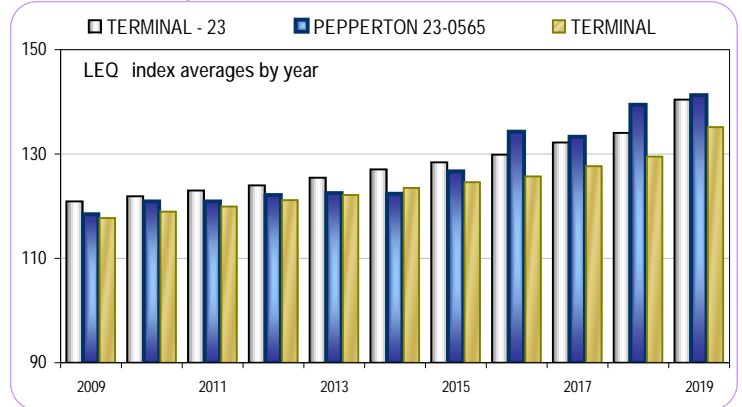
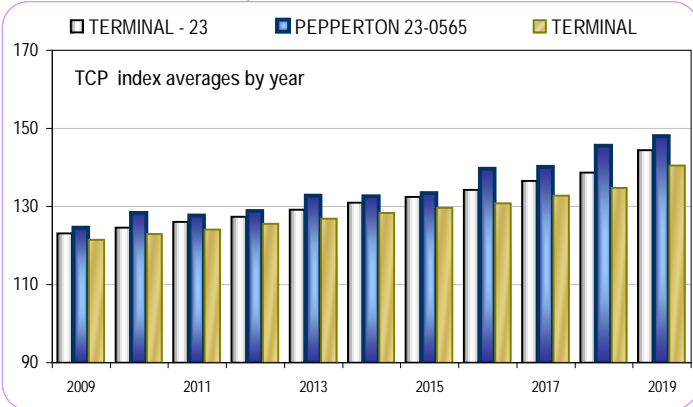


# PEPPERON

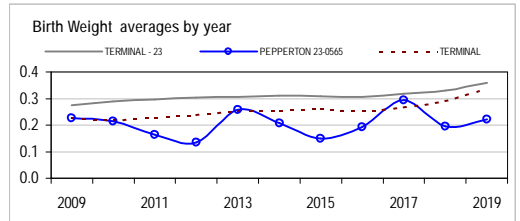
ROGER & DIANNE TREWICK  
23-0565

Analysis : **TERMINAL - 23**

Dated : **15 September 2019**



TERMINAL - 23								
	Bwt	Wwt	Pwwt	Pfat	Pemd	TCP	LEQ	Counts
2010	0.29	6.89	10.70	-0.58	0.60	124.6	121.9	44452
2011	0.30	7.16	11.15	-0.56	0.68	126.0	123.1	48260
2012	0.30	7.49	11.61	-0.55	0.80	127.4	124.0	48353
2013	0.31	7.84	12.18	-0.54	0.92	129.2	125.5	46576
2014	0.31	8.18	12.70	-0.53	1.08	131.0	127.1	44842
2015	0.31	8.47	13.17	-0.50	1.21	132.5	128.4	46886
2016	0.31	8.78	13.68	-0.46	1.35	134.2	129.9	47813
2017	0.32	9.16	14.29	-0.43	1.52	136.6	132.2	53747
2018	0.33	9.47	14.78	-0.40	1.67	138.7	134.1	49782
2019	0.36	10.24	16.03	-0.32	2.00	144.4	140.4	12213



PEPPERON 23-0565								
	Bwt	Wwt	Pwwt	Pfat	Pemd	TCP	LEQ	Counts
2010	0.22	7.07	11.38	-0.11	1.82	128.3	121.0	229
2011	0.17	6.93	10.96	-0.15	1.83	127.8	120.9	338
2012	0.14	6.95	11.15	-0.07	1.96	128.9	122.1	264
2013	0.26	8.14	12.63	-0.02	2.42	132.8	122.5	270
2014	0.21	8.14	12.56	0.14	2.60	132.6	122.4	259
2015	0.15	9.08	14.25	-0.05	1.94	133.5	126.7	219
2016	0.19	8.64	13.87	0.22	2.58	139.7	134.3	216
2017	0.30	9.42	15.12	-0.19	2.05	140.2	133.3	208
2018	0.19	9.78	15.60	-0.05	2.74	145.5	139.4	268
2019	0.22	10.46	16.56	-0.18	2.70	148.1	141.3	214

Reports are prepared using data supplied by breeders and/or accredited operators for the analysis. SheepGenetics cannot guarantee the accuracy of this data. ASBV's are designed to estimate genetic merit of animals from the data supplied. Reports are provided to assist breeders but no liability is accepted for the outcome resulting from the use of this information.

Linkage Summary	
PEPPERON 23-0565	
Weights	Yes
Carcase	Yes
WEC	No
Reproduction	Yes
Site Code	230565

16-September-2019

