

PEPPERON

ROGER & DIANNE TREWICK

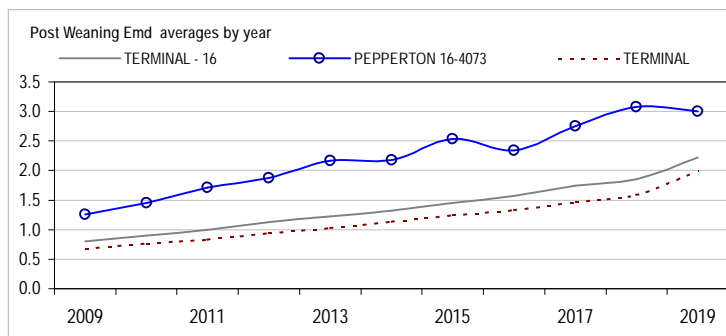
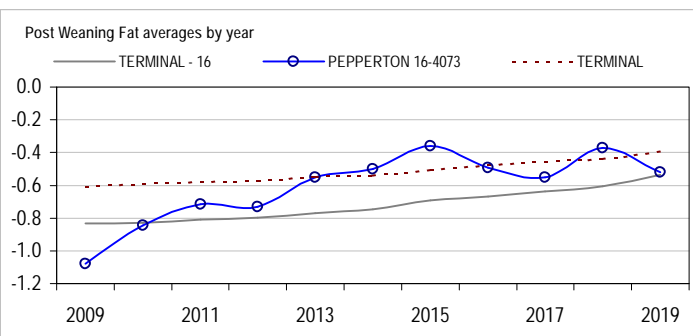
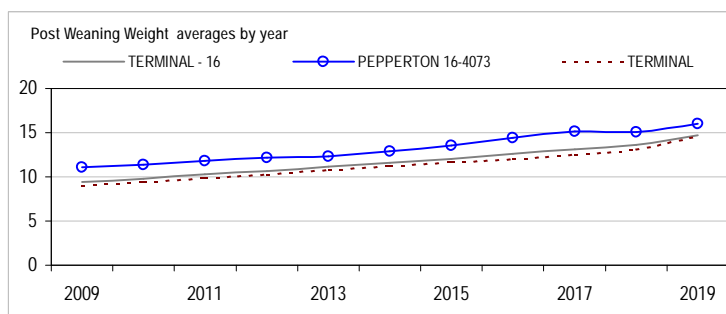
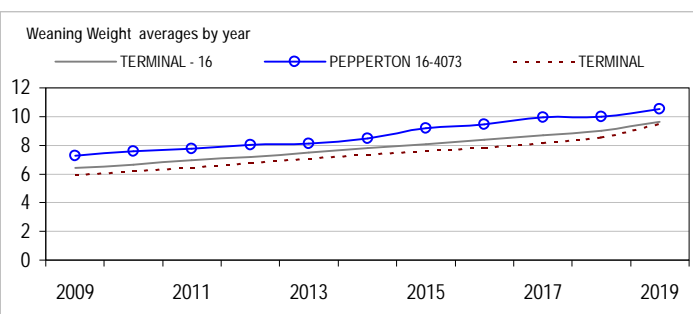
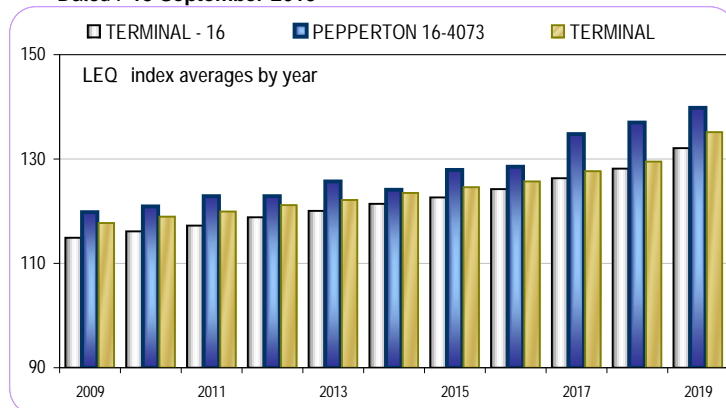
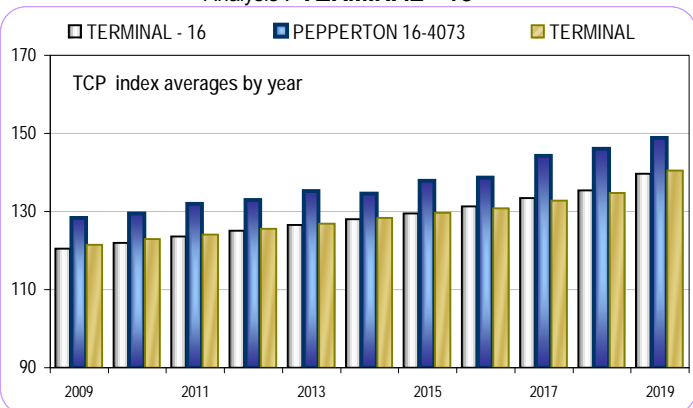
16-4073

SHEEP GENETICS

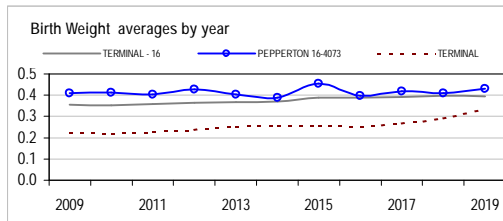


Analysis : **TERMINAL - 16**

Dated : **15 September 2019**



TERMINAL - 16								
	Bwt	Wwt	Pwwt	Pfat	Pemd	TCP	LEQ	Counts
2010	0.35	6.66	9.80	-0.83	0.90	122.0	116.1	47980
2011	0.36	6.95	10.28	-0.81	1.00	123.5	117.3	48465
2012	0.36	7.20	10.67	-0.80	1.12	125.1	118.8	48259
2013	0.37	7.48	11.15	-0.77	1.22	126.6	120.0	47261
2014	0.37	7.79	11.62	-0.75	1.33	128.1	121.4	47108
2015	0.39	8.07	12.05	-0.69	1.46	129.5	122.7	47942
2016	0.39	8.39	12.59	-0.67	1.57	131.3	124.2	47155
2017	0.39	8.70	13.13	-0.64	1.74	133.5	126.3	48474
2018	0.40	9.02	13.61	-0.60	1.85	135.4	128.2	45074
2019	0.40	9.62	14.68	-0.53	2.22	139.6	132.0	12188



Reports are prepared using data supplied by breeders and/or accredited operators for the analysis. SheepGenetics cannot guarantee the accuracy of this data. ASBV's are designed to estimate genetic merit of animals from the data supplied. Reports are provided to assist breeders but no liability is accepted for the outcome resulting from the use of this information.

PEPPERON 16-4073								
	Bwt	Wwt	Pwwt	Pfat	Pemd	TCP	LEQ	Counts
2010	0.41	7.57	11.38	-0.84	1.45	129.5	121.0	571
2011	0.40	7.76	11.78	-0.72	1.72	131.9	122.9	593
2012	0.43	8.03	12.19	-0.73	1.87	133.0	122.9	564
2013	0.40	8.13	12.30	-0.55	2.16	135.2	125.7	523
2014	0.39	8.49	12.87	-0.50	2.18	134.6	124.1	521
2015	0.45	9.19	13.58	-0.36	2.53	137.9	127.9	469
2016	0.40	9.47	14.43	-0.49	2.34	138.7	128.5	398
2017	0.42	9.94	15.14	-0.55	2.75	144.3	134.8	446
2018	0.41	9.98	15.06	-0.37	3.08	146.1	137.0	492
2019	0.43	10.55	15.99	-0.52	3.01	148.8	139.8	373

Linkage Summary	
PEPPERON 16-4073	
Weights	Yes
Carcase	Yes
WEC	No
Reproduction	Yes
Site Code	164073

16-September-2019

