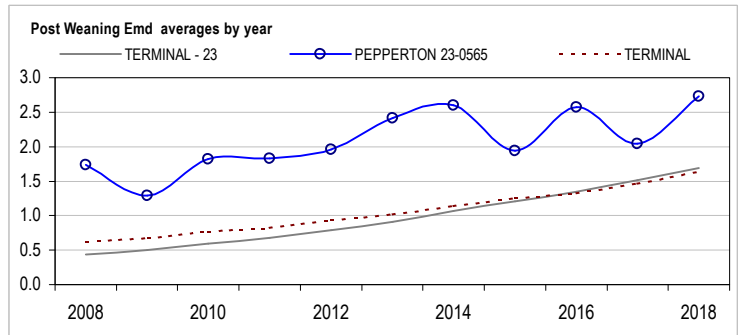
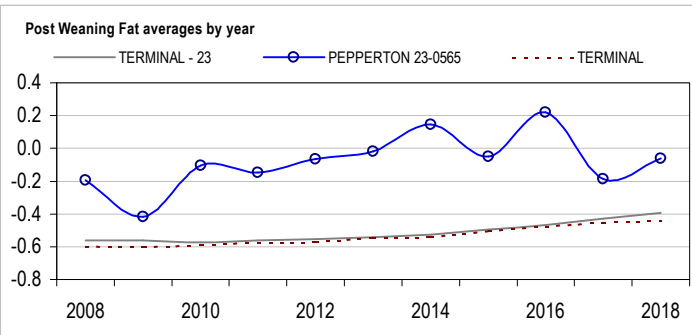
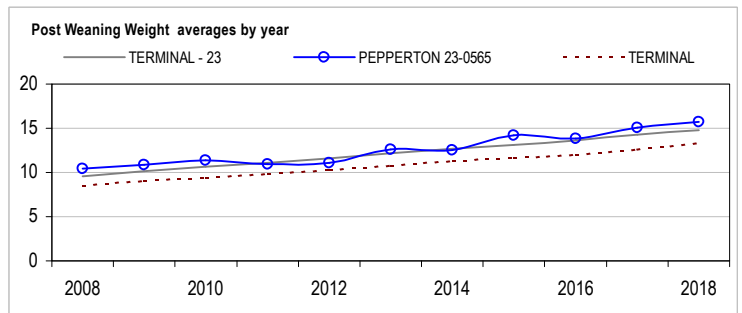
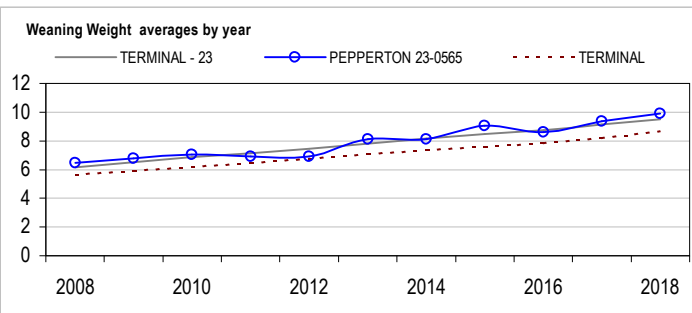
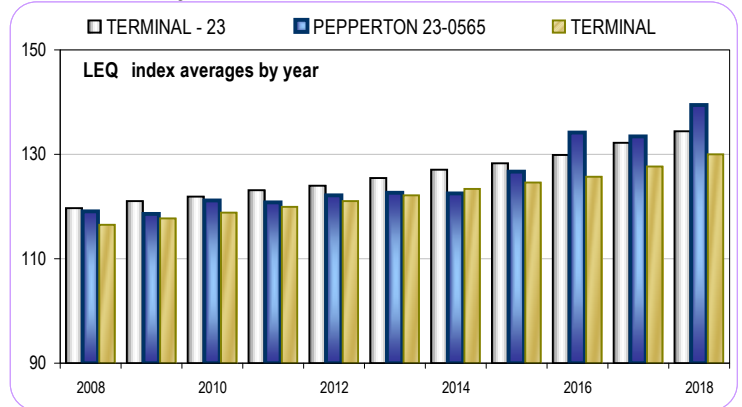
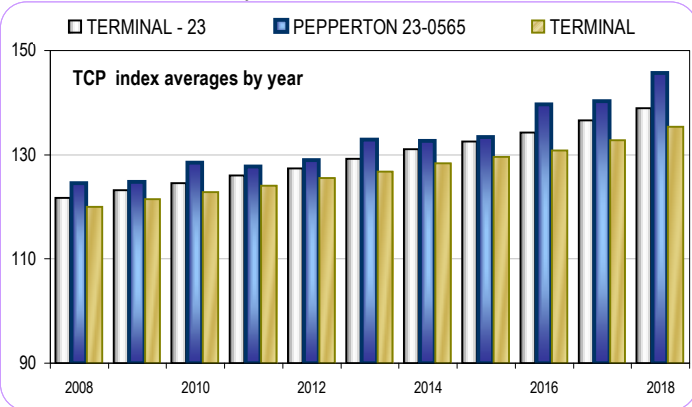
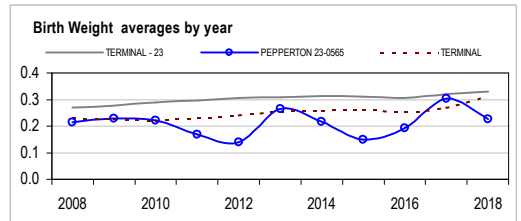


Analysis : **TERMINAL - 23**

Dated : **1 July 2019**



| TERMINAL - 23 | | | | | | | | |
|---------------|------|------|-------|-------|------|-------|-------|--------|
| | Bwt | Wwt | Pwwt | Pfat | Pemd | TCP | LEQ | Counts |
| 2009 | 0.28 | 6.50 | 10.11 | -0.56 | 0.50 | 123.2 | 121.0 | 39404 |
| 2010 | 0.29 | 6.87 | 10.66 | -0.58 | 0.59 | 124.6 | 121.9 | 44450 |
| 2011 | 0.30 | 7.14 | 11.12 | -0.56 | 0.67 | 126.0 | 123.1 | 48251 |
| 2012 | 0.31 | 7.47 | 11.58 | -0.55 | 0.79 | 127.4 | 124.0 | 48346 |
| 2013 | 0.31 | 7.82 | 12.15 | -0.54 | 0.91 | 129.2 | 125.5 | 46561 |
| 2014 | 0.31 | 8.16 | 12.67 | -0.53 | 1.07 | 131.0 | 127.1 | 44819 |
| 2015 | 0.31 | 8.46 | 13.14 | -0.50 | 1.21 | 132.5 | 128.3 | 46842 |
| 2016 | 0.31 | 8.76 | 13.65 | -0.47 | 1.35 | 134.2 | 129.9 | 47753 |
| 2017 | 0.32 | 9.14 | 14.27 | -0.43 | 1.52 | 136.6 | 132.3 | 53712 |
| 2018 | 0.33 | 9.48 | 14.81 | -0.39 | 1.69 | 139.0 | 134.4 | 45104 |



| PEPPERON 23-0565 | | | | | | | | |
|------------------|------|------|-------|-------|------|-------|-------|--------|
| | Bwt | Wwt | Pwwt | Pfat | Pemd | TCP | LEQ | Counts |
| 2009 | 0.23 | 6.80 | 10.85 | -0.42 | 1.29 | 124.8 | 118.6 | 181 |
| 2010 | 0.22 | 7.04 | 11.35 | -0.11 | 1.82 | 128.5 | 121.1 | 229 |
| 2011 | 0.17 | 6.90 | 10.92 | -0.15 | 1.83 | 127.8 | 120.8 | 338 |
| 2012 | 0.14 | 6.92 | 11.11 | -0.07 | 1.96 | 128.9 | 122.1 | 264 |
| 2013 | 0.27 | 8.12 | 12.60 | -0.02 | 2.41 | 132.9 | 122.6 | 270 |
| 2014 | 0.22 | 8.13 | 12.54 | 0.14 | 2.60 | 132.7 | 122.5 | 259 |
| 2015 | 0.15 | 9.04 | 14.21 | -0.05 | 1.94 | 133.5 | 126.7 | 219 |
| 2016 | 0.19 | 8.63 | 13.83 | 0.22 | 2.57 | 139.7 | 134.2 | 216 |
| 2017 | 0.30 | 9.39 | 15.09 | -0.19 | 2.04 | 140.3 | 133.5 | 208 |
| 2018 | 0.23 | 9.91 | 15.72 | -0.06 | 2.73 | 145.8 | 139.5 | 268 |

Reports are prepared using data supplied by breeders and/or accredited operators for the analysis. SheepGenetics cannot guarantee the accuracy of this data. ASBV's are designed to estimate genetic merit of animals from the data supplied. Reports are provided to assist breeders but no liability is accepted for the outcome resulting from the use of this information.

03-July-2019

| Linkage Summary | |
|-------------------------|--------|
| PEPPERON 23-0565 | |
| Weights | Yes |
| Carcase | Yes |
| WEC | No |
| Reproduction | Yes |
| Site Code | 230565 |

