

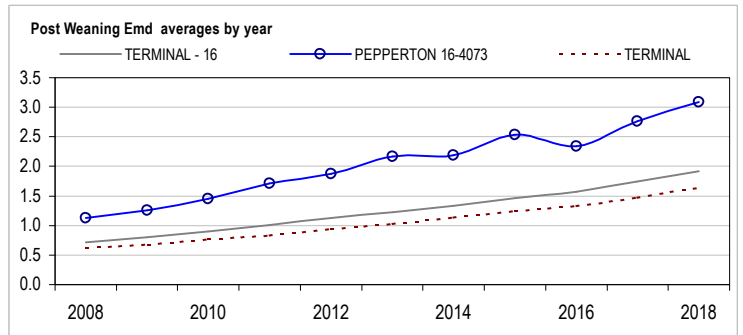
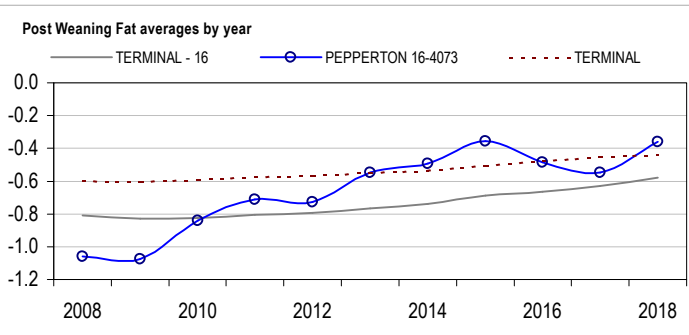
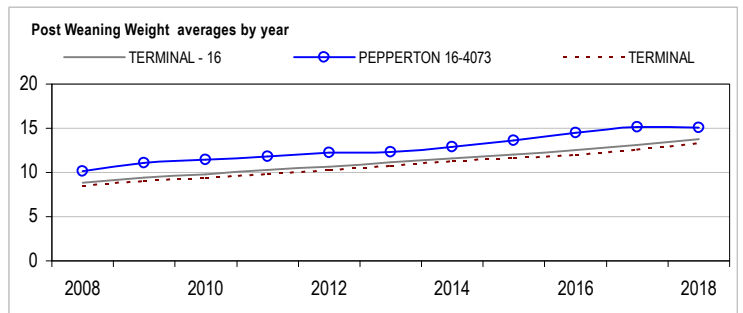
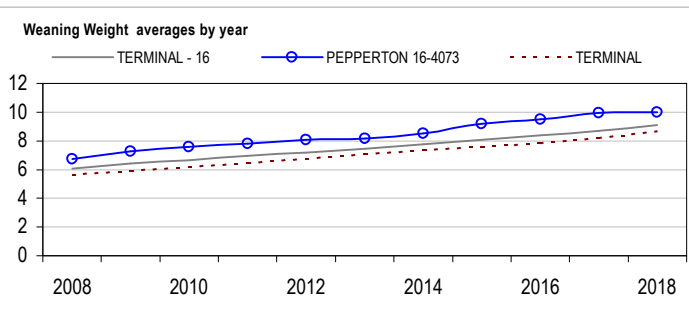
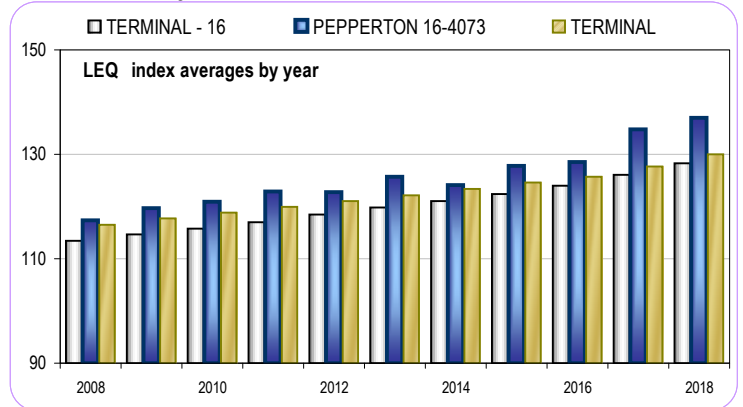
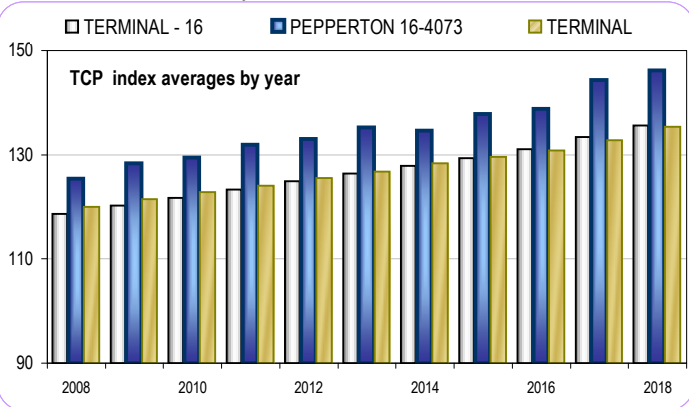
PEPPERON

ROGER & DIANNE TREWICK
16-4073



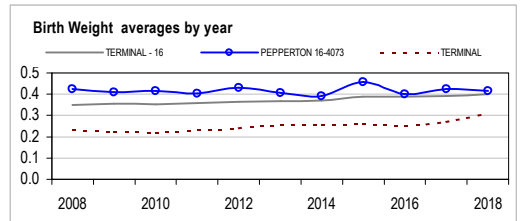
Analysis : **TERMINAL - 16**

Dated : **1 July 2019**



TERMINAL - 16								
	Bwt	Wwt	Pwwt	Pfat	Pemd	TCP	LEQ	Counts
2009	0.35	6.42	9.41	-0.83	0.80	120.3	114.7	46927
2010	0.35	6.65	9.78	-0.83	0.90	121.8	115.8	47980
2011	0.36	6.95	10.26	-0.81	1.01	123.3	117.0	48459
2012	0.36	7.20	10.65	-0.79	1.13	124.9	118.5	48247
2013	0.37	7.47	11.13	-0.77	1.23	126.4	119.8	47235
2014	0.37	7.78	11.60	-0.74	1.33	127.9	121.1	47081
2015	0.39	8.06	12.03	-0.69	1.46	129.3	122.4	47864
2016	0.39	8.38	12.57	-0.66	1.58	131.1	124.0	47060
2017	0.39	8.69	13.11	-0.63	1.75	133.4	126.1	48459
2018	0.40	9.10	13.75	-0.58	1.92	135.7	128.3	40724

PEPPERON 16-4073								
	Bwt	Wwt	Pwwt	Pfat	Pemd	TCP	LEQ	Counts
2009	0.41	7.29	11.09	-1.07	1.26	128.3	119.8	415
2010	0.42	7.60	11.42	-0.84	1.45	129.5	120.9	571
2011	0.41	7.79	11.81	-0.71	1.72	131.9	122.8	593
2012	0.43	8.09	12.24	-0.73	1.88	133.0	122.8	564
2013	0.41	8.15	12.32	-0.55	2.17	135.2	125.7	523
2014	0.39	8.52	12.90	-0.49	2.19	134.6	124.1	521
2015	0.46	9.20	13.60	-0.36	2.53	137.8	127.8	469
2016	0.40	9.50	14.48	-0.49	2.34	138.8	128.6	398
2017	0.42	9.96	15.18	-0.55	2.76	144.4	134.8	446
2018	0.42	9.99	15.09	-0.36	3.09	146.2	136.9	492



Reports are prepared using data supplied by breeders and/or accredited operators for the analysis. SheepGenetics cannot guarantee the accuracy of this data. ASBV's are designed to estimate genetic merit of animals from the data supplied. Reports are provided to assist breeders but no liability is accepted for the outcome resulting from the use of this information.

03-July-2019

Linkage Summary	
PEPPERON 16-4073	
Weights	Yes
Carcase	Yes
WEC	No
Reproduction	Yes
Site Code	164073

